

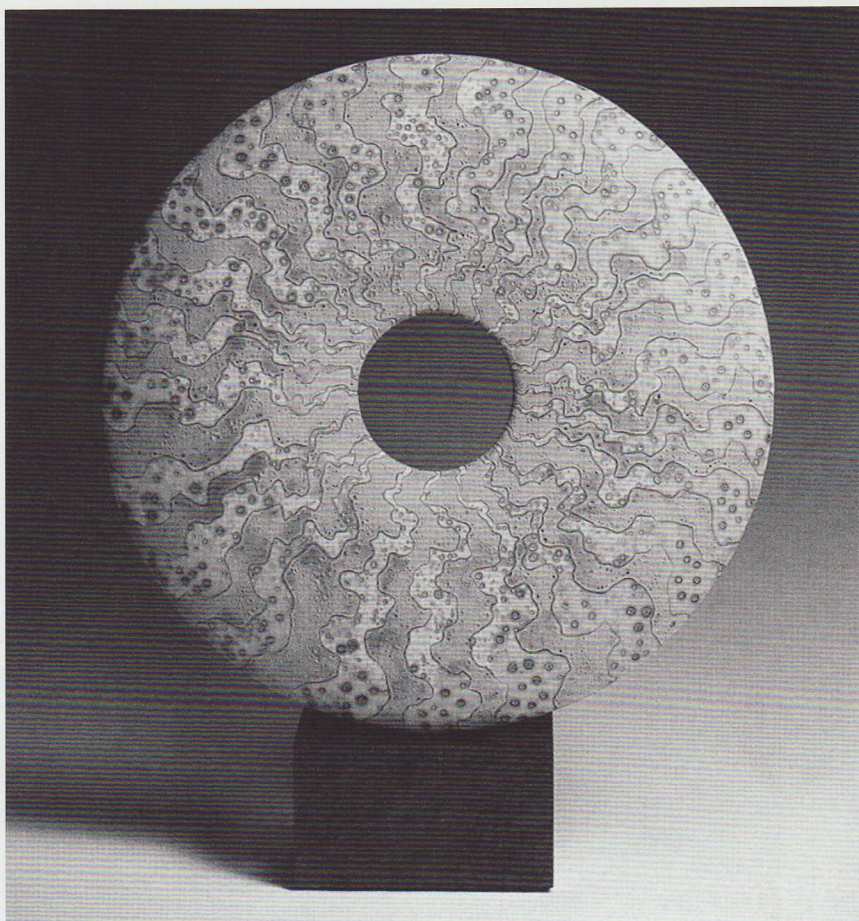


DACORUM AND CHILTERN POTTERS GUILD



IN THIS ISSUE:

Potters Open Day Application
Richard Phethean Demonstration
Programme Update
Stan Romer Award - Winners
Book Reviews - Ceramics Handbooks;
Ceramics with Mixed Media
The Electric Kiln
Handbuilding



www.thedcpg.org.uk
NEWSLETTER
WINTER 2006
£1.50

ABOUT THE GUILD & THE NEWSLETTER

www.thedcpg.org.uk

Membership of the Guild is open to anyone having an interest in pottery and sculpture & offers the members many opportunities each year to see the top potters and sculptors demonstrating their skills. In addition, an annual Open Day is held with demonstrations. Exhibitions, visits and workshops are also organised at various times.

Membership Rates: Family £21.00
Single £17.50
Student £9.00

Send your cheque, made payable to D.C.P.G., to Digby Stott, "Broomfield", 36 Box Lane, Boxmoor, Herts., HP3 0DJ tel: 01442 404122. (If joining after March, please phone for a reduced introductory rate).

The Dacorum & Chiltern Potters Guild Newsletter is published quarterly in February, May, August and November, being distributed free to all members of the Guild, other craft groups & organisations. Contributions to the Newsletter are always welcome (s.a.e. please with any items to be returned). Opinions expressed in items published do not necessarily reflect the opinions of the Committee or Guild members as a whole; nor is the Guild responsible for the content of individual advertisements printed in the Newsletter.

REPRODUCTION OF NEWSLETTER ARTICLES

Articles in this Newsletter are the copyright of the Guild or the Author unless otherwise attributed & may not be reproduced, copied or used in any way without the permission of the Guild or the Author.

<u>Copy dates</u>	<u>Publication dates</u>
(latest receipt of material for typing)	
6 th January	February
6 th April	May
6 th July	August
5 th October	November

We can book space ahead of the copy date but, in general, need the final artwork not later than **THREE DAYS** after the copy date.

ADVERTISING RATES:

¼ page £14.00

½ page £22.50

whole page (depending on availability) £50.00

small ads 25p per word (20 words free to members)

semi-display: 1/12 page 3.5 cm.high x 8cm.wide

from your artwork £7.00

or typesetting – maximum 50 words £10.00

Covers: Back + 20%; Inside + 15%

Distribution of leaflets: A5[2.5gram]-£35.00

A4[5 gram] - £35.00

The above charges are for distribution of 200 leaflets printed on standard weight paper [80 g.s.m.] ready for distribution and delivered direct to the Editor. For other size/weight leaflets and for all advertising enquiries please telephone Sylvia Fitzwilliam on 01442-242 332

Welcome! Walter Brayford Proudly presents the all new and independent **Acme Batt Co.**

Well it's finally happened! After 16 years in the business I've set up my own company. We specialise in the manufacture and supply of kiln furniture to studio potters, hobby potters, colleges and schools...Buying is now as easy as calling A-B-C.

- No minimum order.
- Fast, friendly and efficient service. Happy to discuss your requirements, absolutely no obligation to buy. Free help and advice.
- No longer tied to just one refractory manufacturer...differing qualities and prices. No point in being forced to buy a Rolls Royce when a mini will do?
- Huge **STOCK of 'Best quality' refractories** for immediate collection from our Stoke-on-Trent base, or nationwide delivery-Overnight if required!
- Cut to size service, any size, any shape, any thickness. Square, round, triangular, perforated and plain batts.
- 15 tonnes of **reduced price, slight seconds/subs.** Don't delay!
- **Bankrupt stock.** Please enquire.
- Very competitive prices to suit all budgets.
- **Kiln shelves, tubular props, castellated props, tile cranks, stilts, pins, cements, batt washes etc.**

Please contact Walter Brayford for quotations completely without obligation.

Telephone 01782 505405, Fax 01782 504422


Mobile 07817 040971. Email walter@claylake.com

5%

DISCOUNT

to members of
**Dacorum & Chiltern
Potters Guild**

Please quote membership number
when ordering



Ceramic materials and equipment
to meet all your requirements

Potterycrafts LTD

HEAD OFFICE

Campbell Road, Stoke-on-Trent ST4 4ET

Tel: 01782 745000 Fax: 01782 746000

sales@potterycrafts.co.uk

<http://www.potterycrafts.co.uk>

<p style="text-align: center; font-weight: bold; margin: 0;">LONDON NORTH</p> <p>Winton House, 2 Winton Approach Watford Road, Croxley Green Rickmansworth, Herts WD3 3TL Tel: 01923 800006 Fax: 01923 245544</p>	<p style="text-align: center; font-weight: bold; margin: 0;">LONDON CENTRAL</p> <p>8-10 Ingate Place Battersea, London SW8 3NS Tel: 020 7720 0050 Fax: 020 7627 8290</p>
---	--

FRONT COVER PHOTOGRAPH

Sculpture by Peter Beard

Peter will be one of our demonstrators at the Potters Open Day on Saturday 25th November

CONTENTS

2 Editorial	
2 Pitstone - The future	Ed.
3 Future Guild events	Ros McGuirk
4 Other forthcoming events	Ros McGuirk
4 Book reviews - The Electric Kiln, plus Ceramics with Mixed Media, plus Handbuilding	
5 Notebook	Ed
5 Box Moor Festival	Ed
6 Membership News	
7 Richard Phethean demo.	M.A.Bonney
7 The Stan Romer Award	Ed
8 Chairmans Report 2005-6	Ed
9 Pottery Students-Answer	Danielle Bunker
10 Committee & helpers List	

EDITORIAL

I am just back from holiday, and now working full steam ahead to get this issue of the Newsletter out to you all.

It is always encouraging to have a response to any (provocative) remarks or reports put forward in the newsletter, so the article by Daniell Bunker is very welcome. The question now is will this increase the take-up on courses at West Herts. College? Please write in if you have a point of view that you would like to air.

Our thanks to John & Caroline Romer for supporting the Stan Romer Event at our AGM evening again. Time passes so quickly, I can hardly believe that this was the seventh year that this trophy has been presented. Congratulations to Ros McGuirk on being our winner this year.

Mervyn Fitzwilliam

Pitstone - the future

Jan Kent has now handed over responsibility for the Raku activities at Pitstone Museum to Helen Vernon (01908 648 655) and Ruby Sharp (01494 728 364). Please phone either of them if you would like any details about their plans.

Pots & sculptures are always wanted for the Pitstone activity, either bisque or finished ware. Please remember this when turning out your studio or shed. Any suitable ware can be brought along to the Potters open Day, and given to Helen Vernon, for transport to the site.

The future programme will be in the next Newsletter, guild members and visitors are always welcome to attend.

Future Guild Events

Guild evening meetings are held at the Methodist Church Hall, Kings Langley, starting promptly at 8.00 pm., unless otherwise stated.

Admission is free to members £3 for visitors.

POTTERS OPEN DAY (POD)

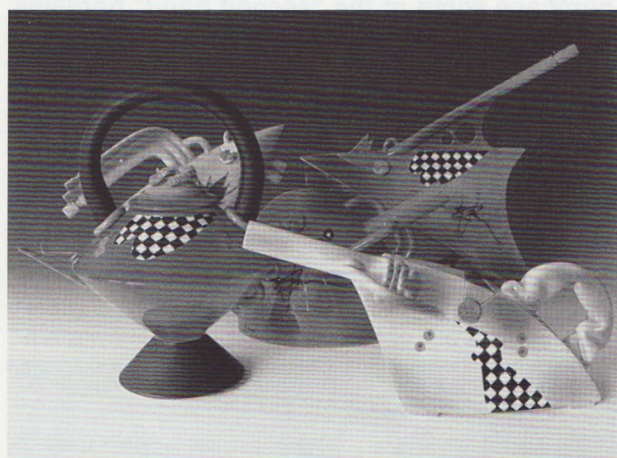
Saturday 25th November 2006

Our Potters Open day this year will be held again at the Longdean School, Rumballs Road, Hemel Hempstead, Herts.

PETER BEARD and RICHARD GODFREY, will be our outstanding demonstrators for this event.

PETER (www.peterbeard.co.uk.) mainly uses stoneware for his individual pieces, (see front cover photograph) which are strong sculptural forms decorated with complex glaze surfaces. These are decorated using glazes built-up in multiple layers with wax resist between layers to create pattern and texture.

RICHARD (www.richardgodfreyceramics.co.uk.) works with a mixture of thrown and hand building techniques with white earthenware clay. The vibrant colours he uses are created by a combination of coloured slips which are sprayed on, brushed and trailed over wax and paper resists to give the stunning effects on his finished work.



Teapots by Richard Godfrey

At our Potters Open day, we will also be holding an exhibition of members work. This will be in the room directly adjacent to the hall, and the members pots on show will also be for sale. If you want to exhibit please contact Kirsteen Holuj, who will be our manager for this aspect of the event. 01280 823 331.

The number of pots or pieces of ceramic work that each person can show will depend on various factors. A 10% commission will be charged on all sales. Each piece of work must have the price clearly marked on it, and a list must be supplied by each participant. In addition, each participant is to prepare a name label / C.V., not bigger than A5, to front their own work.

We will be holding a raffle as usual, and hope to have prizes from our potters. In addition PotteryCrafts are planning to give all those attending the event a discount voucher to use on materials or equipment.

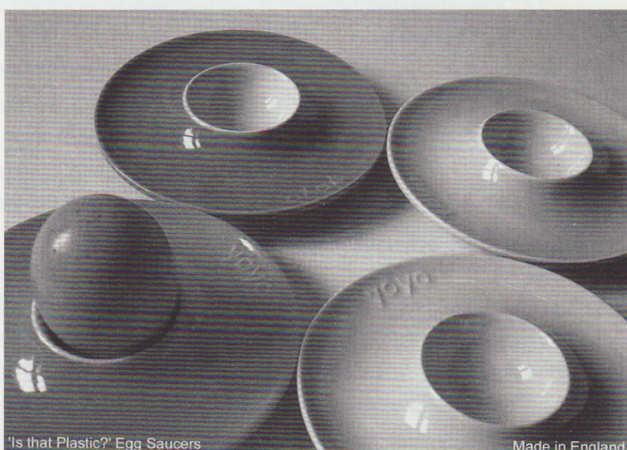
The POD application forms were in the previous issue of the newsletter, but you should find a copy with this issue, together with forms for either renewal of membership or joining as a new member.

Do not miss this outstanding "All day" event, please apply straight away, to avoid disappointment.

Please note that doors will open at 9.00 am. as last year. Do take the opportunity to arrive early if you possibly can, because this will give you time to see the exhibition. And also to purchase some of the "second hand" bargains that we intend to have on offer.

Fri 8 Dec HELEN JOHANNESSEN

Helen is a maker/designer of slipcast domestic Ware. She is also a professional Mouldmaker and in addition she teaches business studies See www.yoyoceramics.co.uk



Fri 12 Jan 'From Wax to Clay', the sculptor and teacher Paul Bainbridge will present an illustrated talk including his career at Madam Tussauds.

Fri 16 Feb Matthew Blakely will demonstrate his own special ways of working with porcelain by throwing and altering to produce soft forms with double footings. Glazing will also be covered. See www.mathewblakely.co.uk



Fri 9 March Paul Rowbottom, Guild member, ceramics teacher and sculptor, will cover a variety of approaches to press moulding for garden planters, and describe recent inspiration for stonecarvings, spun metal forms and hand-built pots.

Members Exhibition

Next year, the annual exhibition will be held at Watford Girl's Grammar School, from 30th April to 12th May. This will be a significant change from the last four years at Olney, and to be successful will require some support from everyone, for two reasons.

The first reason concerns the exhibition area. It is in the Visual Arts Centre, which is also the sixth form block. It is a busy space, and so the work will be viewed and enjoyed by many people. There is a community arts scheme based here, and they offer a free private view, as well as helping with publicity and doing most of the stewarding. As access to the general public is restricted to the hours of after-school activities, it is will be really important that we make full use of this private view, which will be on Monday 30th April '07. It may not be the most

conventional time for a party, but hey, that makes it special. Please put that date in your diary.

It may seem a long way off, but applications will have to be in by end of January, and this brings me to the second reason why we need your support. This show is for everyone to display a few pieces, or maybe just one piece, and selection will be minimal. It is a selling exhibition, but that is not obligatory. There is a great deal of wall space, too, so pictures and wall hangings in any medium will be welcome.

****Please contact me now for an application form, so that I can work out roughly how much work each member may submit and send out the forms in December.**

Ros McGuirk, 13 The Park, St. Albans, Herts, AL1 4RU. Tel: 01727 834326.
Email: ros@iclway.co.uk

Other Events

18-19 Nov Art in Clay. The Southern Pottery and Ceramics Show at Farnham Maltings.

10am-5pm Members of DCPG entitled to £1 discount, so either show the voucher from the previous Newsletter, or show this page on the day.

19Nov-15Dec 'Potters in Jesus Lane'. East Anglian Potters' exhibition at All Saints Church, Jesus Lane, Cambridge. 10am-4pm.

29 Nov-13 Dec. London Potters' Open Exhibition at the Morley Gallery, 61 Westminster Bridge Rd. SE1. 02074 509 226, or email gallery@morleycollege.ac.uk for opening times.

9-16 Dec Les Parrott's Christmas Show of contemporary porcelain and stoneware at 'The Cow Byre', Manor Farm, Pinn Way, Ruislip.
Tel: 01895 255027

Until 22 Dec 'Ming Colours'. Polychrome porcelain from Jingdezhen. Also 'The Ming Vase' - Deconstructing an icon. Front part of ground floor gallery Percival David Foundation of Chinese Art, School of Oriental and African Studies, 53 Gordon Square, London WC1H 0PD. Tel: 0207 387 3909

Many more may be found at
www.studiopottery.co.uk.

International Ceramics Festival in Aberystwyth

This event will take place 6th, 7th, & 8th July 2007.

Ros McGuirk has organised a trip to this festival. The event is actually two days, but there is a Workshop day on 6th.

If you wish to join the group, this will now be on the basis of cancellations from other participants. Please contact Ros on 01727 834 326 or on email [<ros@iclway.co.uk>](mailto:ros@iclway.co.uk)

Please give full details; name, phone no., etc & your address if you have recently moved.

BOOK REVIEWS

The Electric Kiln - A users manual, by Harry Fraser
2nd Edition
A & C Black, Ceramics Handbook series, £14.99

This book, originally produced in 1994, is now added to the ceramics Handbook series, as a second edition. Harry Fraser is a familiar name to Potters, being employed by Potclays for many years until his recent retirement.

The book is exactly what the title says, a users manual, with almost everything you could need to know about electric kilns. The detail of kiln construction & accessories is exhaustive, but the book also covers how to use an electric kiln in considerable detail. For example, there are chapters on kiln furniture, how to load the kiln, detailed effects of heat on clays, pigments & glazes, special effects, ie reduction, crystal glazes & Raku. The author explains that small propane kilns are usually used for Raku, but also discusses electric kiln design for this type of work.

To summarise; if you want the full story on electric kilns and their use, this book is the one to buy.

Ceramics with Mixed Media, by Jo Bosworth.
Ceramics handbook series. A & C Black £14.99

Ceramics with Mixed Media is not a new concept, as the author shows, but it has become increasingly popular over recent years.

Many well known Potters have introduced metalwork and other materials to the ceramic work that they make, and this book carries details of such pieces from Potters familiar to many of our guild members. Steve Harrison features prominently, incorporating silver and wooden handles into his work. (more recently he has worked with larger scale bronzes and continues to develop his skills). There are photographs and descriptions of work from Sarah Walton, Peter Hayes, Bridget Drakeford, Phyllis Dupey and many others.

Information is given on the incorporation of metal and glass into ceramics before and after firing, and the use of many other materials such as wire, plastics, cloth, cords, string etc., which are used to achieve desired effects.

Some information is given on glass forming, metal casting and forming, and wood carving. The book also has several "Health & safety" notes included at appropriate points in the text (this is something of a growing trend, as most of us are finding, although it is essential to understand the precautions necessary when using various chemicals and special techniques).

Handbuilding, by Michael Hardy.

Ceramics handbook series. A & C Black £14.99

This book covers all of the usual areas that might be expected in a book on handbuilding, such as equipment and tools, the types of clay to use, and also some historical information.

The methods, such as pinching, coiling, slab building are covered in detail, with a chapter on press moulding and slipcasting. A further chapter, entitled Combining & developing handbuilding techniques, includes the work of several Potters as examples, with good photographs to illustrate the different methods used.

In general this is a useful book for those of limited experience, but also a good reference on recent developments in handbuilding for those who usually work in this field.

Mervyn Fitzwilliam

CHAIRMANS NOTEBOOK

Workshops

Please give our workshop organiser Helen Vernon a ring if you have any suggestions about future Workshops.

strawberry.fair@virgin.net or phone 01908 648 655.

Longdean School

The committee have sent an invitation to interested students & teachers at Longdean to join us at our Open Day this year. We are also hoping to have another pottery session for some of the students, during early 2007, as we did earlier this year.

Health and safety for Bridge players?

Believe it or not, Bridge clubs must now be issued with a 46 page Health & safety booklet, entitled "Be Safe"

A Quango, the "Learning & Skills Council" is issuing the booklets to institutions and colleges. A signature is expected when the booklets are issued. A spokesman stated that it was the council's duty to promote Health and Safety in the workplace and throughout the further education sector. The contents of this booklet which cost £165,000 to produce, includes tips, such as; dry your hands on towels, not your clothes, take chewing gum out when eating and close drawers, and clean up spills straight away. A quiz includes questions such as; "if the fire alarm rings just as you are about to start your lunch hour, should you wait until you finish your sandwiches before leaving the building?" Successful completion of the quiz entitles the participant to a certificate.

This Quango has a budget of £10.4 Billion each year, (is that £10, 400, 000, 000 ?)

Since stamp collecting clubs are probably quite low on the list, I expect the Pottery guilds will be receiving a phone call anytime soon.

Membership Directory

You can add your name to the membership directory by writing to Jan Kent (address in Committee List). If you have an email address please include that information.

Mervyn Fitzwilliam

The Box Moor Trust Annual Conker Festival - including Pottery with guild members.

15th October 2006

This year we attended the above event with greater resources than previously. The Box Moor Trust had erected two splendid adjacent marquees, giving us a covered area of approximately 32 square metres, and a frontage of about 8 meters (26 feet). We had Three wheels and our throwers were; Helen Vernon, Joy Wills & Mervyn Fitzwilliam.

Our plan was to have at least one additional thrower, so that we could give throwers suitable breaks. Unfortunately one of our members was unable to attend. However, Julia Knowles turned up at the festival with her family, and worked with us as a thrower, for about an hour, which helped us all a great deal.

Our other helpers were; Sylvia Fitzwilliam, Jack Wills and Linda Ablett. Sylvia & Linda supervised the handbuilding & Jack was very resourceful, helping with odd jobs and sales.

The results, from our combined efforts were a lot of very happy faces. Quite a lot of children, and a few adults took their pots home. Sylvia & Linda were kept fully occupied by the Handbuilders, and

although dinosaurs and crocodiles were made, the most popular sculptures were CONKER TREES. Some of these included real twigs and leaves, and some had small piles of clay conkers underneath them, or incorporated conkers in them.

In addition to the throwing and modelling, we had some of the "Lesser Ceramic Sheep" from the collection of Harry and Ruth Karnac for sale. Every one of these was sold, and I am sure we could have sold other suitable ceramics if we had them available.

Financially the outcome was very good, since we were able to give the Hospice of St. Francis a cheque for £247. (last year £95).

Naturally we took the opportunity to talk to members of the public about the guild, with three or four showing some real interest in guild activities, but these discussions were rather restricted by the absence of our extra thrower.

The two photographs below were supplied by Louise Baldwin (Publicity Admin. at Box Moor Trust) and show Mervyn and Joy helping budding Potters



Footnote

I have always believed that being involved with the public in this way helps to engender interest in our pottery group. It also gives people the chance to encounter a pottery experience.

From my own questioning of those involved, it was apparent that few had ever used clay or a wheel previously.

Our thanks go to the Box Moor Trust, for inviting us along to their festival again.

Mervyn Fitzwilliam

Letter from The Hospice of St.Francis;

Dear Mr. Fitzwilliam,

It is my pleasure to acknowledge your kind donation of £247.00 towards the new Hospice building. I gather this was raised at the Box Moor Trust Conker Festival on 15th October.

Gifts such as yours are a huge boost to our fund-raising efforts and will enable us to help patients and families to make the most of every moment they have together. I would be most grateful if you would kindly pass on my thanks to all who contributed.

The construction of our new Hospice is progressing well ahead of schedule. We will gradually be occupying the building between mid November and January 2007. This remains an exciting and challenging time for all of us, particularly as we still need £1.4 million to achieve our overall target for the capital appeal.

Once again many thanks for your valuable donation. Our care is given free which means we must raise in excess of £2 million each year to just keep our doors open. I therefore hope you will be able to continue supporting the Hospice so we can further develop and improve the special care that is synonymous with its name.

Yours sincerely

Roger Sharp

Community Appeals Manager.

MEMBERSHIP NEWS

We are pleased to welcome the following new members to our group;

Vicki Covacic, from great Missenden. Vicki is primarily interested in throwing Stoneware, but particularly in wood firing.

Helen Halliday is an Art Tutor, living in Rickmansworth. Helen is interested in all aspects of pottery & sculpture.

Martia Katz is a Yoga Teacher from Hampstead and is also interested in all aspects of pottery.

Lynne McGechio is a Civil servant & lives in Harrow, being interested in Throwing, handbuilding & decoration of Stoneware & Earthenware.

Dianna Tonnison lives in Milton Keynes, and is a self employed Artist. Diana has an interest in most types of pottery, but particularly sculptural ceramics and Mixed Media Ceramics

Editor

Richard Phethean's demonstration on 13th October

We knew that we were in for something more than an insight into Richard Phethean's skills on the wheel when he prefaced his demonstration with the assertion that "when you've seen one pot thrown you've seen them all". Instead, Richard took us through the combining, altering, building and decorating techniques he uses to produce the striking sculptural forms typical of his current work. His materials remain the terracotta and slips of his early potting career as a domestic thrower, transformed by his drive to innovate and keep moving forward.

The demonstration began with "linear throwing", producing a long rectangular slab with one long edge thicker than the other, decorated with a scored wave. This was put aside while Richard rolled out a base for "one he had made earlier": a bold cylinder with an inward tapering shoulder/rim. The crazed effect achieved by rolling clay on a porous board was stored up in his (and our) memory for later use. Spontaneity and the happy imperfections which can arise with hand made work are vital to Richard. He noted that an accidental dent would give depth to its later coating of slip. The cylinder was cut from its bat at a slight angle and joined with slurry to the base.

The bottom edge of a second, slightly narrower, cylinder was trimmed to match the angle at the top of the first, and the cylinders were joined, leaving one side smooth, the other slightly stepped, and the whole pot leaning gently towards the smooth side. Richard worked decisively, with simple tools and soft hands to minimise fingerprints which might detract from the freshness of the piece. Another slab made earlier, a lip roughly triangular and of a generous size - as the pot was now some 2 feet high - was trimmed: the base which would join the main body was partly cut, partly torn, one side was convex and cut smoothly to become a formal side of the spout, and the other, concave, more roughly trimmed. The whole was gently curved to sit on the rim of the top cylinder, attached with slurry and angled outwards. To balance the forward leaning jug, the handle, half trimmed, half torn, attached fin-like down the "back" of the pot, was angled in the opposite direction, its top leaning away from the vessel.

At this point the pot was left to dry and Richard took the audience through his career, from the traditional slip decorated ware with which he had begun and gradually developed, both in terms of more elegant and complex forms and more elaborate decoration, returning after a stint in Papua New Guinea to the more organic shapes which led onto his present work. Richard looks to

landscape for inspiration. The dramatic shapes and intense colours of his pots evoke the geological structures, the juxtaposition of cliffs, rocks and the sea which fill his sketchbook.

Finally, he showed how he achieved some of his latest decoration: slip, white, black or deep blue (20% cobalt), was applied by brush, thickly, as a covering coat with a Japanese multi tufted bamboo brush and with a "roadkill" brush - a chunk of fur some wild creature had unwittingly donated to art - bound roughly onto a stick, to achieve a free flowing line. Ideally, each layer would be left to dry to leather hard before the next was applied. On some of the areas to be left bare of glaze, he would rub dark blue slip after bisque firing, rubbing it off to leave only the colour trapped in the texture of the clay.

The depth and richness of the effects and the lively and statuesque presence which the pot would attain when fired and glazed were revealed when the wraps came off the two finished examples, which had sat, tantalisingly shrouded in black plastic until the end of this very informative and inspiring demonstration.

Mary Anne Bonney

The Stan Romer Award

Our AGM was also the evening for guild members to show what they could do in the way of teapot making. The entries were judged by Richard Phethean.

Our winner this year, with a "Dalek" teapot was Ros McGuirk. Second place was taken by a fanciful teapot from Vivienne Rodwell Davies. Daniell Bunker took third place with an even more fanciful impression of a teapot.

The photograph below shows Ros receiving her cheque from John Romer, with the Sculpted bison trophy (made by Jane Kilvington, to represent her own winning entry in the very first competition) in the background.

The second photograph shows the winning teapot, and the next shows the second place teapot, with the third place teapot in the background.





Evening meetings Ros McGuirk continues to arrange a very interesting & informative series of evening meetings for us .

Exhibition The sales at our Exhibition at The Studio at Olney were very disappointing, being only £279 net this year (2006). After some discussion, Ros has booked the Arts Centre, at Watford Girls Grammar School, for our 2007 Exhibition. A major plus is that we will be able to have a Private View party.

Pot Crawl Yet again the Pot Crawl failed to happen. This has made Murray Fieldhouse so incensed that he has promised to arrange one for 2007 himself. He has already started on the organisation, with Suffolk/Norfolk being the target.

Workshops The Jola Spytkowska Workshop was subsidised by the Guild, & held at the Rudolf Steiner School in Kings Langley. The follow - up firing had so few applicants that it was cancelled. A Soda firing in October 2006 was arranged at the last minute by Vivienne Rodwell Davis & Paul Rowbottom, but most of those who had previously registered an interest in soda firing were unable to attend.

Helen Vernon is considering either life sculpture workshops, or another Paul Priest Workshop for next year. (2007)

Potters Open Day (POD) Joy Wills organised our POD again, our demonstrators for 2005 were Jack Doherty (CPA Chairman) & Ruthanne Tudball (CPA Vice-Chairman). The event was a sparkling success, with excellent pottery demonstrations and good sales. The venue was Longdean School hall, and the committee decided to make the entrance free to all Guild Members. John Powell was our video expert & we had very strong support from school staff members & pupils, with students helping as lighting & sound technicians.

At the POD, Helen Vernon arranged an excellent exhibition of work made by guild members at the Paul Priest Workshops.

In January 2006 we arranged to give the Longdean art students some basic pottery lessons, under the guidance of the Head of Art, Joanne VanVeggel.

(This was reported in the newsletter in some detail, also on the guild website). We had strong support from Joy Wills, Helen Vernon, David Wright, & Ros McGuirk. I took a wheel so that students could have a go at throwing.

Pitstone Jan Kent continued to be our Pitstone organiser for 2006, with quite a lot of help from Tina Hall. Jan is now handing the administration over to Ruby Sharp & Helen Vernon, who will share the task between them. We wish them every



CHAIRMANS REPORT FOR 2005 - 2006

(issued at the AGM on 13th October 2006)

At our AGM last year (2005) the prizes were given for the 6th Stan Romer Award, won by Joy Wills with a sculptural piece entitled "Shipwreck". Second prize went to David Wright, for his three legged beaker. The third prize was taken by an Aztec style dish made by Les Parrott. Our judge & demonstrator for the evening was Doug Jones.

success, and we thank Jan for his support at Pitstone over the past eight years.

We had a firing at Pitstone on 1st October (2006) and this was very well attended, with some new members being involved for the first time.

We look forward to the new season, in 2007.

The Pitstone days continue to be a valuable part of the Guild interface with the public, and guild members are always welcome.

Other activities – Box Moor (Conker) Festival in October 2005 Helen Vernon, Linda Ablett & Sylvia Fitzwilliam all helped to make the pottery activity a great success at this event, and we were invited back for the 2006 festival. This will be held on Sunday 15th October, on Blackbirds Moor, next to St. Johns Church. Those helping will be Ruby Sharp, Helen Vernon, Joy & Jack Wills, Sylvia Fitzwilliam and Linda Ablett (plus yours truly). We intend to offer pots for sale this year, together with “a pottery experience”. The majority of our proceeds are to be donated to the Hospice of St. Francis.

Membership Digby Stott continues to be our Membership Secretary. Our membership (2005 – 2006) has increased on the previous year's figure, being (approx.) 141, with family membership counted as 2 people

The Committee continue to review the membership subscriptions, but do not want to increase them if we have sufficient funds to cover our various activities.

Newsletter We produce the Newsletter each Quarter with help from Harry & Ruth Karnac, and the staff at Alpine Press. Thanks go to all those who contribute articles for us.

With many other commitments, I am still finding it very difficult to ensure that the newsletter is published on time.

Library Our Library remains a very popular guild resource, and we have more books than we can display. We do have cupboard space for our extra books at the Church Hall. Our Librarian is now Julia Knowles, with help from Joy Wills.

Website John Powell continues to run our Website (www.thedcpg.org.uk) which is growing in popularity. Do let John know if you have any ideas for the website.

Committee Our Committee for 2005-2006 was substantially as during the previous year, although Janet Collings handed over the library to our new member Julia Knowles.

Jan Kent continues to be our treasurer & has volunteered to stay on in 2007.

Peter Nissen has moved to Scotland with his wife, Heather. Peter & Heather had been helping with Pitstone on some occasions.

Jane Kilvington will be retiring from the guild, since she now is unable to come to our meetings. Jane has always been a great help to me in acting as our booking clerk for various events, including the Stan Romer Award tonight. Our thanks to Janet Collings

& Jane Kilvington for their particular support, and our thanks to all of our committee & helpers for all that they do for us

If you have any ideas about Guild events, or Guild activities that you would like to discuss, please do talk to any committee member about them.

Mervyn Fitzwilliam (Chairman)

Where do students learn?

This was a question raised by Mervyn in the Chairman's notebook, Autumn 2006 newsletter.

I have the answer ... West Herts College.

Whilst many colleges are closing their ceramics departments, West Herts College is not only nurturing but expanding its courses with the addition of the new City & Guilds Higher Professional Development course which is now in its second year.

The college supported its first Open Studios exhibition this year, curated by students from the hpd course, which was a huge success and will be the first of many.

The facilities are excellent and boast bright, well-equipped studios with a separate glazing room, a spray booth, a number of wheels, including two Alsager wheels, bought last year, 3 electric kilns and a raku kiln. We are currently looking at the possibility of adding a gas kiln to this inventory.

Expert instruction is given at all levels as can be seen by the high quality, professional work being created by students (there is no place for modesty here). This is supported by visits and visiting potters. Last year Jack Doherty, Will Levi Marshall, and Roy Ashmore all gave demonstrations and ran workshops; we went on two residential visits - to Rome and Cornwall, and visited a number of local museums and galleries, including a handling session at the Bucks County Museum and visits to the Ceramics Galleries at the V&A.

We offer a broad range of courses:

- City & Guilds Certificate in design and Craft (one day x 34 weeks)
- City & Guilds Diploma in design and Craft (one day x 34 weeks)
- City and Guilds Higher Professional Diploma in Creative Arts (one day x 34 weeks)
- Studio Ceramics (3 hours x 15 weeks - morning or afternoon)
- Pottery (2 hrs x 14 weeks - evening)
- Introduction to clay modelling and drawing (3hrs x 15 weeks - afternoon)

Costs are not prohibitive. The course fees of all accredited courses include the majority of clays and glaze materials and all kiln firings. The leisure courses, although charged slightly differently, are also excellent value for money.

The college is situated in Hempstead Road, Watford and is easily accessible from all directions.

For a part time brochure contact the learning link on 01923 812345, for more information about the courses, contact me, Danielle Bunker on: 01923 812681 or leave a message on 01923 812691, alternatively, email to Danielle.bunker@westherts.ac.uk

We still have places on most courses. I look forward to signing you in.

Pottery Course at The Making Place, Berkhamstead.

Vacancies for a place on this intensive, structured course taught by a professional potter. Every Thurs, 9.45-3.45pm. Beginners welcome. Opportunities for throwing and hand building.

Contact Geof Parr on 01494 782657

COMMITTEE LIST

Murray Fieldhouse (President) 01442-851 229
Northfields Studio, Tring, Herts. HP23 5QW
Mervyn Fitzwilliam (Chairman & Newsletter)
"Longfield", Bulstrode Lane, Felden, Hemel Hempstead, Herts. HP3 0BP 01442-242332
Jan Kent (Treasurer/Pitstone Organiser) 01908-674 051
48 Coleshill Place, Bradwell Common, Milton Keynes, Bucks. MK13 8DP

John Beckley (Secretary) 01923-822 659
44 Wolsey Road, Northwood, Mdx. HA6 2EN
Digby Stott (Membership) 01442-404 122
"Broomfield", 36 Box Lane, Boxmoor, Herts, HP3 0DJ
Joy Wills (Open Day Organiser) 01296-481 015
21 Tindal Road, Aylesbury, Bucks. HP20 1HT
Ros McGuirk (Programme Organiser & Vice-Chairman)
13 The Park, St. Albans, Herts. AL1 4RU 01727-834 326
Kirsteen Holuj (Publicity) 01280-823 331
Railing, 7a Mitre St. Buckingham, Bucks. MK18 1DW
Julia Knowles (librarian & Open Day) 01923 260 054
6 Common Cottages, Common Lane, Kings Langley, Herts. WD4 8BW

COMMITTEE HELPERS

We are very grateful to any members who help with guild activities, and especially to our members who help us on a regular basis. Other members sometimes need to contact these helpers, so phone numbers are given below;

Event bookings; Jane Kilvington has now retired from the guild, so this position is vacant.

Tina Hall (Pitstone & Catering) 01442 826 223

John Powell (Website) 01494 774 398

Helen Vernon (Workshops & Pitstone Raku)

01908648 655

Ruby Sharp (Pitstone Raku)

01494728 364

THE ARTS CENTRE at Brunel

Arts Centre
Brunel University
Uxbridge
Middx UB8 3PH

Tube lines:
Piccadilly &
Metropolitan

Brunel University
exists to provide high
quality education and
research of use to
the community

BRUNEL UNIVERSITY ARTS CENTRE

WEEKEND COURSES 10am-4pm

Fees include all basic materials, firings, models, tools for use on course

October 2006

21/22 Life in Clay Julian Cooksey £104
Sculpture from the Life Model – all levels

21/22 General Throwing Laura Peacock £88
A chance to improve your throwing skills – one wheel per student

November 2006

4/5 Introduction to Throwing Laura Peacock £88

For beginners and the unsure thrower – one wheel per student

4/5 Writing in Gold Timothy Noad £94

Exploring a variety of techniques of calligraphic writing using gold ink, paint, leaf

18/19 Cartooning Martin Henley £88

Looking at exaggeration, stylisation and character development for humour or fantasy

18/19 Porcelain jewellery Beryl Sedgwick £94

Create your own unique ceramic jewellery in porcelain and paperclay

December 2006

2/3 Portrait Studies in Wax Julian Cooksey £104

Use this warm and responsive medium to produce a head from life

2/3 Precious Metal Clay Rebecca Skeels £116

Precious metal clay is moulded like clay, but when fired is 99.9% solid silver

For full details visit www.brunel.ac.uk/artscentre or ring 01895 266074

New Arts Centre opens September 2006 with purpose-built Ceramics Suite

The Arts Centre, Brunel University, Uxbridge Middx UB8 3PH

RAYEFCO LTD.

LONGFIELD, BULSTRODE LANE, FELDEN, HEMEL HEMPSTEAD,
HERTFORDSHIRE HP3 0BP

PHONE / FAX 01442 242332



FITZWILLIAM WHEEL

Reg. Design

YOU COULD BUY ANY WHEEL

....OR YOU COULD BUY A
FITZWILLIAM WHEEL

....."My Rolls Royce".....

Mildred Slatter (1970)

...owned my Fitzwilliam Wheel for Twenty Five
years..... wonderfully comfortable to use..... a joy to
work on..... still in perfect order.....

Mrs. C.C. (2000)

..... the Survey (Ceramic Review) told me what I
already know..... have worked on many wheels.....
Fitzwilliam wheel is the best there is.....

Mr.D.S. (2000)

**The Craftsman Wheel
Fitzwilliam Wheel
Felden Wheel**

Pottery Wheels designed by Mervyn Fitzwilliam,
available for hire or sale from Rayefco limited.

THE Potters CONNECTION

**OUR NEW SHOWROOM IS NOW OPEN!
THE POTTERS CONNECTION LTD HAS MOVED!**

WE NOW HAVE SHOWROOM PREMISES OPPOSITE THE FAMOUS
GLADSTONE POTTERY MUSEUM.

WE HAVE A VAST RANGE OF TOOLS, BRUSHES, SIEVES,
WHIRLERS ETC ON DISPLAY AS WELL AS THE INCREASINGLY
POPULAR SHIMPO WHEELS. A SMALL SELECTION OF OUR VAST
RANGE OF TOP AND FRONT LOADING KILNS IS ALSO ON SHOW.

IF YOU ARE THINKING OF MAKING A SPECIAL JOURNEY TO US
& WOULD LIKE TO COLLECT AN ORDER, SIMPLY CALL US A
COUPLE OF DAYS IN ADVANCE & WE WILL HAVE YOUR ORDER
WAITING FOR YOU WHEN YOU ARRIVE.*

WE STILL AIM TO PROVIDE ALL OF YOUR CRAFT AND HOBBY
POTTERY NEEDS AT VALUE FOR MONEY PRICES, SO IF YOU DO
NOT HAVE A COPY OF OUR CATALOGUE, PLEASE CONTACT US &
WE WILL RUSH ONE OFF TO YOU IN THE POST!

★ 5% Discount to DCPG Members ★

THE POTTERS CONNECTION LTD

CHADWICK ST, LONGTON, STOKE-ON-TRENT, ST3 1PJ

TEL: 01782 598729 FAX: 01782 593054

EMAIL: SALES@POTTERS-CONNECTION.SAGEHOST.CO.UK

*Subject to availability

**So many clays you
could be bewildered...**



... So much advice you won't be

With over 70 years history of
quarrying and manufacturing, our
range of clay bodies is now the
widest on the market. We can supply
clay to meet your every need and
offer specialist advice in making
your choice, should you require it.

But we don't stop there...whatever
else you may need is right here for
you; from tools and glazes to
machinery and our own kilns built
on site. Let us help you to reach your
creative potential!

POTCLAYS

The Professional Choice

www.potclays.co.uk Tel: 01782 219816

5% discount to all Dacorum & Chiltern Potters Guild members