



# DACORUM AND CHILTERN POTTERS GUILD



## IN THIS ISSUE:

Future events

Pitstone Report / Programme 2006

join our Raku firing day

Potters Open Day

including Guild Exhibition

'Picking up the Pieces'

Olney Exhibition 2006 report



---

[www.thedcpg.org.uk](http://www.thedcpg.org.uk)

NEWSLETTER

AUTUMN 2006

£1.50

## ABOUT THE GUILD & THE NEWSLETTER

[www.thedcpg.org.uk](http://www.thedcpg.org.uk)

Membership of the Guild is open to anyone having an interest in pottery and sculpture & offers the members many opportunities each year to see the top potters and sculptors demonstrating their skills. In addition, an annual Open Day is held with demonstrations. Exhibitions, visits and workshops are also organised at various times.

Membership Rates: Family £21.00

Single £17.50

Student £9.00

Send your cheque, made payable to D.C.P.G., to Digby Stott, "Broomfield", 36 Box Lane, Boxmoor, Herts., HP3 0DJ tel: 01442 404122. (If joining after March, please phone for a reduced introductory rate).

The Dacorum & Chiltern Potters Guild Newsletter is published quarterly in February, May, August and November, being distributed free to all members of the Guild, other craft groups & organisations. Contributions to the Newsletter are always welcome (s.a.e. please with any items to be returned). Opinions expressed in items published do not necessarily reflect the opinions of the Committee or Guild members as a whole; nor is the Guild responsible for the content of individual advertisements printed in the Newsletter.

### REPRODUCTION OF NEWSLETTER ARTICLES

Articles in this Newsletter are the copyright of the Guild or the Author unless otherwise attributed & may not be reproduced, copied or used in any way without the permission of the Guild or the Author.

<u>Copy dates</u>	<u>Publication dates</u>
-------------------	--------------------------

(latest receipt of material for typing)

6 <sup>th</sup> January	February
6 <sup>th</sup> April	May
6 <sup>th</sup> July	August
5 <sup>th</sup> October	November

We can book space ahead of the copy date but, in general, need the final artwork not later than **THREE DAYS** after the copy date.

### ADVERTISING RATES:

¼ page	£14.00
½ page	£22.50
whole page (depending on availability)	£50.00
small ads 25p per word (20 words free to members)	
semi-display: 1/12 page 3.5 cm.high x 8cm.wide	
from your artwork	£7.00
or typesetting – maximum 50 words	£10.00
Covers: Back + 20%; Inside + 15%	
Distribution of leaflets: A5[2.5gram]-£35.00	
A4[5 gram] - £35.00	

The above charges are for distribution of 200 leaflets printed on standard weight paper [80 g.s.m.] ready for distribution and delivered direct to the Editor. For other size/weight leaflets and for all advertising enquiries please telephone Sylvia Fitzwilliam on 01442-242 332

**Welcome!**

**Walter Brayford**

Proudly presents the *all new* and *independent*

**Acme Batt Co.**

Well it's finally happened! .... After 16 years in the business I've set up my own company. We specialise in the manufacture and supply of kiln furniture to studio potters, hobby potters, colleges and schools...Buying is now as easy as calling A-B-C.

- > No minimum order.
- > Fast, friendly and efficient service. Happy to discuss your requirements, absolutely no obligation to buy. Free help and advice.
- > No longer tied to just one refractory manufacturer...differing qualities and prices. No point in being forced to buy a Rolls Royce when a mini will do?
- > Huge **STOCK of 'Best quality' refractories** for immediate collection from our Stoke-on-Trent base, or nationwide delivery-Overnight if required!
- > Cut to size service, any size, any shape, any thickness. Square, round, triangular, perforated and plain batts.
- > 15 tonnes of **reduced price, slight seconds/subs**. Don't delay!
- > **Bankrupt stock**. Please enquire.
- > Very competitive prices to suit all budgets.
- > **Kiln shelves, tubular props, castellated props, tile cranks, stilts, pins, cements, batt washes etc.**

Please contact Walter Brayford for quotations completely without obligation.

Telephone 01782 505405, Fax 01782 504422

Mobile 07817 040971. Email [walter@claylake.com](mailto:walter@claylake.com)

## **FRONT COVER PHOTOGRAPH**

**Jug form, by Richard Phethean (Richard will be our demonstrator at the AGM 13<sup>th</sup> October)**

## **CONTENTS**

2 Editorial	
2 Pitstone 2006	Jan Kent
3 Future Guild events	Ros McGuirk
3 Other forthcoming events	Ros McGuirk
4 Book reviews – The Ceramic Narrative by Matthias Ostermann.	Mervyn Fitzwilliam
	Coiling by Michael Hardy
	Kirsteen Holuj
5 Exhibition report	Ros McGuirk
5 Proposed Workshops	
5 Notebook	Mervyn Fitzwilliam
6 Correspondence	
6 Membership News	
7 'Picking up the Pieces'	Ruth Brown
7 New Term – Old Clay	Ruth Brown
8 Committee & helpers List	

## **EDITORIAL**

One thing is certain about this issue of the Newsletter, it will be late. Just how late I am not sure, but let me just say that other things have intervened.

The atmosphere at Art-in-Action this year was very positive (although also very hot!) I believe that the number of visitors was down on last year, but I think that most Potters were rather more optimistic about the state of the market than previously.

The continuing closure of adult education classes, and other pottery / ceramics opportunities remains a concern for many.

Mervyn Fitzwilliam

## **Pitstone May and June 2006**

Our first open day this year was the Spring Bank Holiday Monday. The weather was not great, short spells of sun, sharp showers of rain and a bitter wind, but despite this there was a good flow of visitors.

Since Mervyn and I were the only ones there from the Guild, we did not fire up the kiln, (although in view of the wind, that may have been a mistake). Instead Mervyn was giving "play with clay" sessions to passing children while I tried to sell pots to their parents. Between us we made £35, mostly down to Mervyn's efforts.

The next open day was the 11th June and this was a Craft Day at the Museum. The day was much

warmer and sunnier, but, probably because of the World Cup, the visitor turnover was disappointing. This time Mervyn brought along a small electric wheel and set himself up to give people a go at throwing.

In the meantime, Tina Dorothea and I ran the "have-a-go" glazing and firing and the pot sales. Considering the low visitor numbers, we did well to take £30, quite a bit of which came from Tina's daughter Naomi and grandchildren Jade and Charlie, who all had a go at pretty well everything.

As I mentioned in a previous newsletter, our shed was showing considerable signs of woodworm. The Museum volunteers very kindly painted the outside with creosote while they were doing the other buildings and now Bob Toon has done the inside too. This involved emptying all the junk inside to outside, painting and then putting it back again. Many thanks Bob!

Remaining Pitstone Craft Open Days this year will be **13th August and 10th September**.

As well as the Craft days, the museum opens to the public on Bank Holidays. These days are usually even better attended than the craft days, as far as visitors go. The next Bank Holiday is **28th August**.

I have been running the Pitstone Raku firings for eight years now and I feel it is time for someone else to take it on. I will continue doing it for the rest of this year, but I hope someone else will volunteer to take it on for next year. Otherwise it will grind to a halt.

Anyone wishing to volunteer or wanting more information can contact me at the Friday meetings, or by phone (01908 674051) or by email ([jan@jktech.demon.co.uk](mailto:jan@jktech.demon.co.uk)). Jan Kent

*(Please also refer to the note about Pitstone under the Guild events heading – editor)*

## **Future Guild Events**

### **Guild Raku day Sunday 1<sup>st</sup> October.**

We are holding a Guild Raku day at Pitstone Museum, Pitstone, Tring, on Sunday 1<sup>st</sup> October. This is not a day for public admissions, so we will be on our own, apart from some museum staff. We will have the guild raku kiln plus Jan Kent's kiln. We hope that someone else may bring a third kiln, so if you have one give Jan a ring.

Please bring pieces to fire in the raku kilns on the day. We have some glaze materials available, or you can bring your own. There will be no charge for this event for guild members, visitors will be expected to make a small contribution.

Bring something to eat and drink. Planned starting time any time after 9.00 am. finishing at 3.00 pm. Please phone Jan Kent if you intend to come, so that we know how many will attend. Give him a ring on 01908 674 051.

***Guild evening meetings are held at the Methodist Church Hall, Kings Langley, starting promptly at 8.00 pm., unless otherwise stated. Admission is free to members £3 for visitors.***

Fri 13 Oct AGM., Stan Romer Competition and Richard Phethean. Richard is well-known at venues such as Chelsea, for his slipped terracotta, has written books on throwing and teaches on the degree course at Harrow. Currently he is producing sculptural forms by throwing, altering and slabbing. Please note that this meeting starts at 7.30 pm. and contestants should bring their entries at 7 pm.

### **POTTERS OPEN DAY**

Saturday 25<sup>th</sup> November 2006

Our popular annual event this year will be held again at the Longdean School, Rumballs Road, Hemel Hempstead, Herts.

PETER BEARD and RICHARD GODFREY, are our outstanding demonstrators at this event.

PETER ([www.peterbeard.co.uk](http://www.peterbeard.co.uk).) mainly uses stoneware for his individual pieces, which are strong sculptural forms decorated with complex glaze surfaces. These are decorated using glazes built-up in multiple layers with wax resist between layers to create pattern and texture.

RICHARD ([www.richardgodfreyceramics.co.uk](http://www.richardgodfreyceramics.co.uk).) works with a mixture of thrown and hand building techniques with white earthenware clay. The vibrant colours he uses are created by a combination of coloured slips which are sprayed on, brushed and trailed over wax and paper resists to give the stunning effects on his finished work.

### **POTTERS OPEN DAY EXHIBITION**

At our recent committee meeting we decided to add another dimension to our Potters Open day, by holding an exhibition of members work. The outline plan is that we will have tables available in the room directly adjacent to the hall, so that members can display their pots and also sell them.

Kirsteen Holuj has volunteered to take bookings for exhibition space & will be our manager for this aspect of the event.

When planning such an event it is essential to know exactly how many exhibitors we will have, so to book your space you **MUST** phone Kirsteen by not later than mid October 01280 823 331.

The number of pots or pieces of ceramic work that each person can show will depend on various factors, but plan on six pieces each until final details are available.

A 10% commission will be charged on all sales. Each piece of work must have the price clearly marked on it, and a list must be supplied by each participant. In addition, each exhibitor is to prepare a name label / C.V., not bigger than A5, to front their own work.

We will also be holding a raffle as usual, and hope to have prizes from our potters. In addition PotteryCrafts are planning to give all those attending a discount voucher to use on materials or equipment.

The application forms should be with this issue of the Newsletter, together with application forms for either renewal of membership or joining as a new member.

**Please note that doors will open at 9.00 am.** as last year. Do take the opportunity to arrive early if you possibly can, because this will give you time to see the exhibition. And also to purchase some of the "second hand" bargains that we intend to have on offer.

### **Fri 8 Dec HELEN JOHANNESSEN**

Helen is a maker/designer of slipcast domestic Ware. She is also a professional Mouldmaker and in addition she teaches business studies See [www.yoyoceramics.co.uk](http://www.yoyoceramics.co.uk)

## **Other Events**

2<sup>nd</sup> Sept. AUTUMN KILN OPENING at Muchelney Pottery, Muchelney, Langport, Somerset.

2<sup>nd</sup> to 24<sup>th</sup> Sept. Open Studios Organised by Herts. Visual Arts Forum. You can contact them via [www.hvaf.org.uk](http://www.hvaf.org.uk) or phone 07813 100 651 several guild members are involved with this activity, and you can pick up a leaflet from any Hertfordshire library.

22<sup>nd</sup>- 24<sup>th</sup> Sept. CERAMICS IN THE CITY At the Geffrye Museum, Kingsland Rd. E2 Exhibition of +60 Potters For more information email: [bunting@virgin.net](mailto:bunting@virgin.net)

24<sup>th</sup> Sept. Doug Jones Open day at Riverside Cottage, 114 Norfolk Road, Rickmansworth. 01923 770 913. Kiln opening at 11.00 am.



**25<sup>th</sup> Sept.** Slide talk by **MARGARET FRITH** at 2.45pm at the Soho Family Centre, Broadwick St, followed by a private view of her new show at Contemporary Ceramics, the CPA shop in Marshall St W1. Tel 0207 437 7605. Booking is essential. Tickets £4, £8, £10 Details from Don Hudson tel.01297 444 633.

**29<sup>th</sup> Sept.** 'CRAFT ROCKS, CERAMICS' Lectures, dis-cussions, performances, workshops and late bar from 6.30-10pm ~(!) at the V & A. [www.vam.ac.uk](http://www.vam.ac.uk) or email [vanda@am.ac.uk](mailto:vanda@am.ac.uk) or phone 0207942 2211

**6<sup>th</sup> Oct 'PLANETS'** The Zelli Porcelain Award 2006. Selected entries on view at Zelli Porcelain 55-57 Chiltern St. W1. 0207 224 2114 or email [info@zelli.co.uk](mailto:info@zelli.co.uk)

**3-8 & 10-15 Oct 'ORIGIN'** Contemporary Craft at Somerset House, Strand, WC2. The bright new version by [www.craftscouncil.org.uk/newevent](http://www.craftscouncil.org.uk/newevent) of the old Chelsea craft fair. +300 makers & events. £8 (concs £6). One visit each week £12 (£10), season pass £15. For advanced bookings call 0870 145 1120. or [www.ticketmaster.co.uk](http://www.ticketmaster.co.uk) Booking fees apply.

**Demonstration by Steve Harrison Sat.15<sup>th</sup> October**  
Arranged by the Barnet Collection, at St. Marys Church Hall, Finchley, 10.00 am to 4.00pm.  
Please Phone Vivienne Rodwell Davies for more details or to book a place, on 02084 410 904.

**19-21 Oct AFFORDABLE ART FAIR**, Battersea Park, London. Ticket hotline on 0870 777 2255 Open Thur 11-21.30, Fri 11-18.00, Sat & Sun 11-1800

**19-22 Oct DESIGNER CRAFTS AT CHELSEA.** A new event organised by the Society of Designer Craftsmen at Chelsea Town Hall, Kings Rd. SW3. 10-7.30pm. [www.designercraftsatchelsea.org.uk](http://www.designercraftsatchelsea.org.uk)

**24 Oct BONHAM'S SALE – VISION 21.**  
Includes contemporary ceramics. Montpelier St. SW7 Tel 0207 468 8269.  
or email [contemporaryceramics@bonhams.com](mailto:contemporaryceramics@bonhams.com)

**28-29 Oct OXFORD STUDIO CERAMICS 2006**  
CPA Autumn Fair at St. Edward's School, Woodstock Rd. Oxford. St 10-6 and Sun 10-4.30 pm. +60 potters also demos. and talks. Tel CPA at 0207 437 6781 or email John and Jude Jelfs at [jude@oxfordsc.co.uk](mailto:jude@oxfordsc.co.uk) [www.oxfordsc.co.uk](http://www.oxfordsc.co.uk)

**7 Nov BONHAMS SALE OF 20<sup>TH</sup> CENTURY JAPANESE CERAMICS** Auction at 101 New Bond St W1. 6 pm. See [www.bonhams.com](http://www.bonhams.com) for viewing times

**8-12 Nov COUNTRY LIVING SPRING FAIR** Business Design Centre, 52 Upper St. Islington

**18<sup>th</sup> 19<sup>th</sup> Nov** 10.00am to 5.00pm. Southern Pottery & ceramics Show at Farnham Maltings.  
NOTE: £1 discount voucher enclosed, or show this page of the Newsletter on the day.

**29<sup>th</sup> Nov to 13<sup>th</sup> Dec.LONDON POTTERS' OPEN EXHIBITION** at the Morley Gallery, 61 Westminster Bridge Rd SE1. 0207 450 9926 or email [gallery@morleycollege.ac.uk](mailto:gallery@morleycollege.ac.uk) for opening times.

### International Ceramics Festival in Aberystwyth

This event will take place 6<sup>th</sup>, 7<sup>th</sup>, & 8<sup>th</sup> July 2007.

Ros McGuirk has volunteered to organise a trip to this festival, and she emphasises the need to have the details of all members who think that they might want to Join the trip **AS EARLY AS POSSIBLE**, and certainly by mid October at the very latest. The costs last year were just over £100 per person, with accommodation at £15 per night, self catering.

The event is actually two days, but there is a Workshop day on 6<sup>th</sup>.

If you intend to join the group, please contact Ros on 01727 834 326 or on email [ros@iclway.co.uk](mailto:ros@iclway.co.uk) With your name, phone no., etc & your address if you have recently moved.

### BOOK REVIEWS

**The Ceramic Narrative by Matthias Ostermann.**  
A & C Black, Hardback £30.00

The author has an inherent love of stories, myths & legends, which he inherited from his mother. She was a professional raconteuse in Germany, and this whole background gives a flavour of what to expect in the book.

The journey starts in ancient Greece, proceeds to the Maya, then China, Persia and Japan, followed by European Tin-glaze tradition and then European Porcelains.

A David Whiting Essay entitled the 20<sup>th</sup>-Century Ceramic Narrative is included as chapter 6 of the book. The title of the Essay is "Some Precursors and Pioneers". This includes a discussion of ceramics produced by Henri Matisse & Paul Gauguin, working with the Potters Andre Metthey and Ernest Chaplet respectively, through to work by William Newland, Margaret Hine & Nicholas Vergette. Work by American Potters is also discussed, and the conclusion includes a mention of British "work that bites" by people such as Grayson Perry, Phillip Eglin & Stephen Dixon.

The remaining six chapters of the book are a series of "Contemporary Narratives", including Mythology, Icons, Personal visions, The human figure, Political & social commentary, and finally The object as message & metaphor.

Mervyn Fitzwilliam

### Coiling by Michael Hardy

This is the latest addition to the collection of Ceramic Handbooks published by A & C Black and is a good introduction to the process of coiling. Like all the Ceramic Handbooks this really does just only touch the surface of the process, but for those with no experience is an excellent book to get you started.

The book briefly discusses the history of coiling, materials required and tools best used, but what is quite nice about this book is the coverage of different methods from around the world from countries such as Africa, South America and the Mediterranean. But perhaps the most useful section of this book is the methods of contemporary potters such as Kate Malone, Jane Perryman and Ewen Henderson describing their individual techniques, firing temperatures and experiences. There is also an interesting chapter on ceramic sculptors who coil, such as Althea Wynne and Peter Colquitt.

This is an ideal handbook for anyone just starting out using the coiling process or for someone with more experience who wants more information on current ceramicists; the text is enhanced with lots of colour images to inspire.

Kirsteen Holuj

### OLNEY in MAY'06

#### The Organiser's Report on the Annual Exhibition

Many thanks to all who took part in the annual exhibition at the New Studio Gallery in Olney, and especially to Vivienne, Jola and Elspeth who set to with the putting up and taking down.

As always, it was a most attractive show, with plenty to see and a good mix of styles from both new participants and old friends. This is what makes the annual exhibition so interesting, and I hope that you all enjoyed it, too.

Unfortunately, I have to report that sales were significantly lower than usual, as they seem to be everywhere. Over the four weeks the group sold 13 items, making £289.75 net. The customers paid an average of £35-70 per item, and the gallery made a little over £6 per day.

This has, inevitably, led to a re-evaluation of our own situation, and the only conclusion is that it seems to be the right time to consider moving on. To keep the annual exhibition fresh, and to encourage greater participation from the membership, next year it is coming back 'home' to Herts. The show will be held in the Arts Centre at Watford Girls Grammar School. In addition, for the first time in ages, we will have a great preview party. It will all happen next May, so watch out for the dates in our next Newsletter.

Our New Studio exhibitions have been a great venture. It is an excellent venue in many ways, being in such a lovely place. The staff are friendly and helpful, and I am grateful for all their support over the last four years. So I am sorry that I will not be working with them next year, and in particular with Keren Monnickendam, the enthusiastic and energetic gallery owner, who has taught me much about running exhibitions and life in general. We may return there at some stage, but meanwhile we have a new kind of show to plan, and with your support it should be better than ever.

Ros McGuirk

### WORKSHOPS

The Jola Spytkowska. Firing Workshop was cancelled due to a poor response. However, any unfinished work can be fired at the Raku day on 1<sup>st</sup> October. See guild events, on P2.

Please give our workshop organiser Helen Vernon a ring if you have any suggestions about future Workshops.

[strawberry.fair@virgin.net](mailto:strawberry.fair@virgin.net) or phone 01908 648 655.

A soda firing Workshop is still on the cards, and also a salt glaze firing using the "Rocket" kiln. Details from Helen as above.

### CHAIRMAN'S NOTEBOOK

#### Where do students learn now?

With the continuing closure of adult education courses & school pottery classes, where do those interested in pottery go now?

Well, some courses are continuing, and many Potters and Potteries are now starting to run "Summer Schools" and other regular teaching activities. More "Paint a Pot" shops are opening up, so perhaps some will give attention to adults who want regular classes on a deeper level. At least two suppliers of materials also run pottery workshops and seminars.

To some extent, then, the answer is that the teaching activity is being taken up by people paying for private lessons.

If you are planning to pick up the reins of such an idea and give classes to one or two students then jolly good luck to you, but a note of caution. You would be unwise to do this on a totally casual basis, without setting out a sensible plan for a "safe" environment (ie Risk Assessment) & also ensuring that you had suitable insurance cover.

For example, I recently found myself testing some wheels for a pottery, close to the opening date for their classes. Unfortunately the wheels failed the safety tests, needing overhaul & retesting before they could be used. At another Pottery, with classes imminent, the testing of equipment prior to opening had not even been considered in any way at all.

The point is that all electrical equipment must be tested for safety before you allow others to use it otherwise you are breaking the law. Even worse you could be sued in the event of an accident.

#### **Help needed with Transport**

Pat Green is a member living in Boreham Wood, who needs a lift to evening meetings. No-one has come forward to help her, how about you? If you can help please phone her on 02 083 866 620

#### **Longdean School**

The committee intend to extend an invitation to interested students at Longdean to join us at our Open Day this year. We are also hoping to have another pottery session for some of the students, as we did earlier this year.

#### **Craft or Art?**

Currently the Midland Potters are considering a name change for their group, in particular to include the word Art in their title. The idea behind this is a hope that this may improve the status & clout of the group when applying for grants etc. Underneath the above idea is the wish to move potters away from the folksy level into the realm of artists. This subject has been raised in our own group many times over the years. If you have any thoughts on this please let us know.

#### **Membership Directory**

You can add your name to the membership directory by writing to Jan Kent (address in Committee List). If you have an email address please include that information.

Mervyn Fitzwilliam

### **Correspondence**

Dear Mervyn,

Re: The Boxmoor Trust Annual Conker Festival –  
15<sup>th</sup> October 2006

We are beginning to organise our annual Conker Festival for later this year and after the success of the clay modelling at last years event, we were wondering if you would be willing to come along again?

We really appreciated your involvement last year and the whole event was a great success (much to do with the lovely sunny day) and you were all kept very busy with all the kids doing clay modelling and having a go on the pottery wheels.

We would be delighted if you would be willing to run the pottery for us again this year? We understand that you may already have other commitments but as your event was so successful, we wanted to invite you again.

If you could let us know if you are able to attend, we would appreciate it as we are trying to get all the entertainment and activities booked well in advance

Kind Regards, Yours Sincerely,

Louise Baldwin (Publicity Admin)

*I have told Louise that we will give some pottery lessons in a similar fashion to those given last year. If you have an interest in helping with this please give me a ring*

Editor

### **MEMBERSHIP NEWS**

Peter & Heather Nissen probably now qualify as our "furthest flung" Guild members, since they are currently living with family in Dunfirmline. They are presently on the point of buying a house with its own Loch & Byrnes – well, very small ones apparently. A log cabin workshop is due for delivery soon!! Watch this space.

#### **New Members**

Keiko Hattori has joined us. She regards herself as "mostly a Housewife", but also has time for pottery, being interested particularly in majolica. Keiko lives in Wembley.

Jenny Birch has also joined us. Jenny lives in Bushey and is retired. She is interested in all aspects of pottery.

As always, we are very pleased to welcome new members, and we hope that they will enjoy being with the guild.

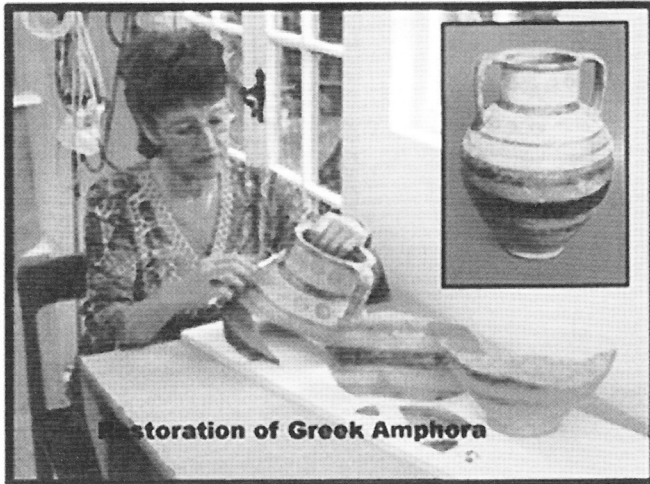
Editor

### Committee – Changes

Jan Kent has faithfully supported the Raku activities at Pitstone for the past eight years. He intends to stand down from the Pitstone activities this year, so we are looking for a volunteer to keep this project going at the Farm Museum, in Pitstone. Any offers?

Mervyn Fitzwilliam

### 'PICKING UP THE PIECES' PAULINE ASHLEY



Pauline Ashley's interest in ceramics started at school where it was her favourite subject. At college she began throwing and continued at evening classes while she was studying to be a teacher. Later she ran summer workshops for children and continued to make, exhibit and sell her work.

She built her first kiln with the help of a friend, later she moved and created a workshop and built a gas kiln. The pots she made covered a wide range of styles and ideas flowed.

Sometimes she used a saggar in the kiln and also fired with sawdust. She showed us some slides covering her type of work. She enjoyed experimenting and used many clays.

In order to use gold leaf on her work she attended a class for restoration and was immediately hooked and so began her interest in this work which has continued for many years. She has repaired modern pots and has also worked on historical pieces.

Before she can work on any pots they have to be thoroughly cleaned and all adhesives which may have been applied must be removed, so they are cleansed with soap and water with cotton buds being used for small details.

Amongst some of the work on ancient pots, Pauline bravely repaired a Greek amphora, 2,750 years old. Looking at the slides she showed us of the amphora before and after, she obviously did a terrific job.

The amazing detailed skill that is needed for this work, rebuilding broken pots, replacing missing pieces, filling in the cracks, tiny chips and finding the exact colours to match the glazed pots must be difficult requiring knowledge, patience and time.

She uses modern epoxy materials which are blended and applied to the item after colouring and adding opacifiers, and also industrial repair substances acquired from manufacturers.

Pauline works on a variety of media: terracotta, stoneware, porcelain, Raku, Tiffany plates and porcelain dolls. In addition she includes repairing glass, jade, onyx, wood, alabaster, bronze and papier maché.

I have listed all these materials as it is always good for us to know, in case we ever need her skills ourselves.

Ruth Brown

### Appendix

Courses for ceramic restoration;

West Dean College, Sussex

Missenden Abbey, Great Missenden, Bucks.

The Mowbray Studio, Essenden, Hertfordshire

Suppliers of materials;

Tiranti, Warren St., London W1P 5DG

Useful Handbook;

Repairing Pottery & Porcelain, by Lesley Acton & Paul McAuley, Published by A&C Black.

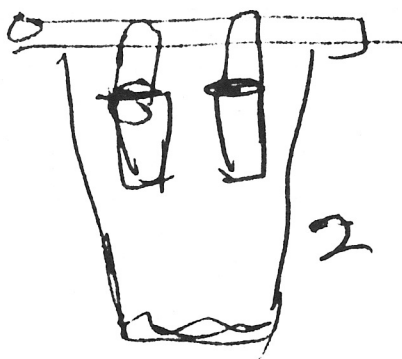
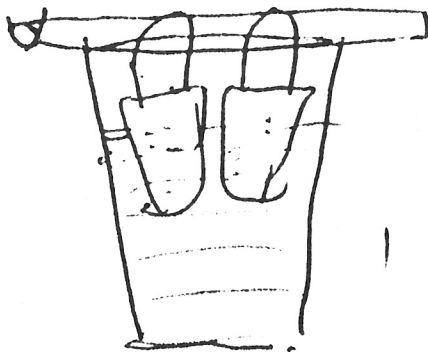
Institute:

ICON – The Institute of Conservation, 3<sup>rd</sup> Floor, Downstream building, 1 London Bridge, London SE1 9BG

## NEW TERM - OLD CLAY

Facing up to re-using clay was always a problem when I was teaching. It is difficult if you are using a number of different clays. I worked out a simple way which was efficient.

Put the dry clay into a plastic bag, break into small pieces with a rolling pin, then stab the bag using a sharp pointed instrument. Suspend on a rod over a bucket of water and leave overnight. Drain the bag over another bucket. Then place contents onto a plaster bat, leave a while, then wedge - and re-use. It is easy and much quicker than digging out of bins!



## COMMITTEE LIST

**Murray Fieldhouse** (President) 01442-851 229  
Northfields Studio, Tring, Herts. HP23 5QW  
**Mervyn Fitzwilliam** (Chairman & Newsletter)  
"Longfield", Bulstrode Lane, Felden, Hemel Hempstead,  
Herts. HP3 0BP 01442-242332  
**Jan Kent** (Treasurer/Pitstone Organiser) 01908-674 051  
48 Coleshill Place, Bradwell Common, Milton Keynes,  
Bucks. MK13 8DP  
**John Beckley** (Secretary) 01923-822 659  
44 Wolsey Road, Northwood, Mdx. HA6 2EN  
**Digby Stott** (Membership) 01442-404 122  
"Broomfield", 36 Box Lane, Boxmoor, Herts, HP3 0DJ  
**Joy Wills** (Open Day Organiser) 01296-481 015  
21 Tindal Road, Aylesbury, Bucks. HP20 1HT  
**Ros McGuirk** (Programme Organiser & Vice-Chairman)  
13 The Park, St. Albans, Herts. AL1 4RU 01727-834 326  
**Kirsteen Holuj** (Publicity) 01280-823 331  
Railing, 7a Mitre St. Buckingham, Bucks. MK18 1DW  
**Julia Knowles** (librarian & Open Day) 01923 260 054  
6 Common Cottages, Common Lane, Kings Langley,  
Herts. WD4 8BW

## COMMITTEE HELPERS

We are very grateful to any members who help with guild activities, and especially to our members who help us on a regular basis. Other members sometimes need to contact these helpers, so phone numbers are given below;

Jane Kilvington (Event bookings) 01727 853 156  
Tina Hall (Pitstone & Catering) 01442 826 223  
John Powell (Website) 01494 774 398  
Helen Vernon (Workshops) 01908 648 655



www.pearsoned.com

MR F

A detailed illustration of a dragonfly and its nymph. The dragonfly is shown in profile, with its long, segmented body, large compound eyes, and six legs. Its wings are spread out, showing the intricate venation. Below the dragonfly is its nymph, which has a more robust, segmented body and long, thin legs. The nymph is shown in a similar profile view, highlighting its aquatic adaptations.

# THE ARTS CENTRE at Brunel

Arts Centre  
Brunel University  
Uxbridge  
Middx UB8 3PH

Tube lines:  
Piccadilly &  
Metropolitan

*Brunel University  
exists to provide high  
quality education and  
research of use to  
the community*

## BRUNEL UNIVERSITY ARTS CENTRE

### WEEKEND COURSES 10am-4pm

*Fees include all basic materials, firings, models, tools for use on course*

October 2006

21/22	Life in Clay	Julian Cooksey	£104
	<i>Sculpture from the Life Model – all levels</i>		

21/22	General Throwing	Laura Peacock	£88
	<i>A chance to improve your throwing skills – one wheel per student</i>		

November 2006

4/5	Introduction to Throwing	Laura Peacock	£88
	<i>For beginners and the unsure thrower – one wheel per student</i>		

4/5	Writing in Gold	Timothy Noad	£94
	<i>Exploring a variety of techniques of calligraphic writing using gold ink, paint, leaf</i>		

18/19	Cartooning	Martin Henley	£88
-------	------------	---------------	-----

*Looking at exaggeration, stylisation and character development for humour or fantasy*

18/19	Porcelain jewellery	Beryl Sedgwick	£94
-------	---------------------	----------------	-----

*Create your own unique ceramic jewellery in porcelain and paperclay*

December 2006

2/3	Portrait Studies in Wax	Julian Cooksey	£104
	<i>Use this warm and responsive medium to produce a head from life</i>		

2/3	Precious Metal Clay	Rebecca Skeels	£116
	<i>Precious metal clay is moulded like clay, but when fired is 99.9% solid silver</i>		

For full details visit [www.brunel.ac.uk/artscentre](http://www.brunel.ac.uk/artscentre) or ring 01895 266074

**New Arts Centre opens September 2006 with purpose-built Ceramics Suite**

The Arts Centre, Brunel University, Uxbridge Middx UB8 3PH

# 5%

## DISCOUNT

to members of  
**Dacorum & Chiltern  
Potters Guild**

Please quote membership number  
when ordering



Ceramic materials and equipment  
to meet all your requirements

**PotteryCrafts LTD**

HEAD OFFICE

Campbell Road, **Stoke-on-Trent** ST4 4ET

Tel: **01782 745000** Fax: 01782 746000

[sales@pottery crafts.co.uk](mailto:sales@pottery crafts.co.uk)

<http://www.pottery crafts.co.uk>

LONDON NORTH

Winton House, 2 Winton Approach  
Watford Road, Croxley Green

Rickmansworth, Herts WD3 3TL

Tel: **01923 800006** Fax: 01923 245544

LONDON CENTRAL

8-10 Ingate Place

**Battersea**, London SW8 3NS

Tel: **020 7720 0050**

Fax: 020 7627 8290

# RAYEFCO LTD

LONGFIELD, BULSTRODE LANE, FELDEN, HEMEL HEMPSTEAD,  
HERTFORDSHIRE HP3 0BP

PHONE / FAX 01442 242332



FITZWILLIAM WHEEL

*Reg. Design*

## YOU COULD BUY ANY WHEEL ....

## ...OR YOU COULD BUY A FITZWILLIAM WHEEL

....."My Rolls Royce".....  
*Mildred Slatter (1970)*

...owned my Fitzwilliam Wheel for Twenty Five years..... wonderfully comfortable to use..... a joy to work on..... still in perfect order.....  
*Mrs. C.C. (2000)*

..... the Survey (Ceramic Review) told me what I already know..... have worked on many wheels..... Fitzwilliam wheel is the best there is.....  
*Mr.D.S. (2000)*

**The Craftsman Wheel  
Fitzwilliam Wheel  
Felden Wheel**

Pottery Wheels designed by Mervyn Fitzwilliam,  
available for hire or sale from Rayefco limited.

## THE Potters CONNECTION

**OUR NEW SHOWROOM IS NOW OPEN!  
THE POTTERS CONNECTION LTD HAS MOVED!**

WE NOW HAVE SHOWROOM PREMISES OPPOSITE THE FAMOUS GLADSTONE POTTERY MUSEUM.

WE HAVE A VAST RANGE OF TOOLS, BRUSHES, SIEVES, WHIRLERS ETC ON DISPLAY AS WELL AS THE INCREASINGLY POPULAR SHIMPO WHEELS. A SMALL SELECTION OF OUR VAST RANGE OF TOP AND FRONT LOADING KILNS IS ALSO ON SHOW.

IF YOU ARE THINKING OF MAKING A SPECIAL JOURNEY TO US & WOULD LIKE TO COLLECT AN ORDER, SIMPLY CALL US A COUPLE OF DAYS IN ADVANCE & WE WILL HAVE YOUR ORDER WAITING FOR YOU WHEN YOU ARRIVE.\*

WE STILL AIM TO PROVIDE ALL OF YOUR CRAFT AND HOBBY POTTERY NEEDS AT VALUE FOR MONEY PRICES, SO IF YOU DO NOT HAVE A COPY OF OUR CATALOGUE, PLEASE CONTACT US & WE WILL RUSH ONE OFF TO YOU IN THE POST!

★ 5% Discount to DCPG Members ★

### THE POTTERS CONNECTION LTD

CHADWICK ST, LONGTON, STOKE-ON-TRENT, ST3 1PJ

TEL: 01782 598729 FAX: 01782 593054

EMAIL: SALES@POTTERS-CONNECTION.SAGEHOST.CO.UK

\*Subject to availability

**So many clays you  
could be bewildered...**



**... So much advice you won't be**

With over 70 years history of quarrying and manufacturing, our range of clay bodies is now the widest on the market. We can supply clay to meet your every need and offer specialist advice in making your choice, should you require it.

But we don't stop there...whatever else you may need is right here for you; from tools and glazes to machinery and our own kilns built on site. Let us help you to reach your creative potential!

### **POTCLAYS**

**The Professional Choice**

www.potclays.co.uk Tel: 01782 219816

**5% discount to all Dacorum & Chiltern Potters Guild members**